



Phase I Cases

(Early Interceptive Treatment)
Average Age 7-8 years old

Cases Treated by:

Bella Shen Garnett, DMD, MMSc

Intial



Final



Age: 7- Female Thumb sucking habit

Appliance: Expander with Tongue Crib along with 2X4 sectional braces

Treatment Length: 13 months



Treated by Dr. Bella Shen Garnett

Intial

Final



Age: 8 – Female with Skeletal Underbite and anterior crossbite

Appliance: Expander / Reverse Pull Headgear to advance the maxilla (upper jaw) in anticipation that the lower jaw will grow last to avoid surgery in the future

Treatment Length: 12 months



Treated by Dr. Bella Shen Garnett

Intial



Final



Age: 8 – Female with a right posterior crossbite and mandibular asymmetry
Appliance: Fixed Rapid Palatal Expander / 2X4 braces (sectional braces)
Treatment Length: 11 months



Treated by Dr. Bella Shen Garnett

Intial



Final



Age: 10 - Female with a right posterior crossbite and maxillary incisor protrusion)

Appliance: Fixed Rapid Palatal Expander / Herbst followed by 2X4 sectional braces

Treatment Length: 9 months



Treated by Dr. Bella Shen Garnett

Intial



Final



Age: 8 – Male with a Lip-biting Habit caused dental protrusion

Appliance: Fixed Rapid Palatal Expander with Herbst appliance followed by sectional 2X4 braces

Treatment Length: 13 months



Treated by Dr. Bella Shen Garnett



Before

After

Age: 7 – Female with Severe Anterior Crowding

Appliance: Fixed Rapid Palatal Expander followed by sectional 2X4 Braces

Treatment Length: 9 months



Treated by Dr. Bella Shen Garnett



Before

After

Age: 8 – Female with a blocked out upper lateral incisor and lower crowding
Appliance: Fixed Rapid Palatal Expander followed by sectional 2X4 braces and a lingual holding arch
Treatment Length: 14 months



Treated by Dr. Bella Shen Garnett

Intial



Final



Age: 9 – Female with maxillary incisor protrusion

Appliance: Fixed Rapid Palatal Expander / Headgear followed by sectional 2X4 braces

Treatment Length: 12 months



Treated by Dr. Bella Shen Garnett



Before

After

Age: 8 – Male with Severe Crowding and insufficient space for maxillary laterals to come in.

Appliance: Rapid palatal expander and lower Schwartz appliance with bite block followed by sectional 2X4 braces

Treatment Length: 12 months



Treated by Dr. Bella Shen Garnett

Initial



Final



Age: 7 – Female with Severe Maxillary and Mandibular Crowding and thumb sucking habit.

Appliance: Rapid palatal expander with finger crib followed by sectional 2X4 anterior braces

Treatment Length: 14 months



Treated by Dr. Bella Shen Garnett

Initial



Final



Age: 8 – Female with a right posterior crossbite, protrusion, and mild upper crowding.

Appliance: Rapid palatal expander followed by sectional 2X4 anterior braces

Treatment Length: 12 months



Treated by Dr. Bella Shen Garnett

Initial

Final



Age: 6- Male with severe maxillary and mandibular crowding. There is no room for his maxillary lateral incisors and lower canines to come in.

Appliance: Rapid palatal expander followed by sectional anterior braces and a lower lingual holding arch to hold space until the lower canines come in.

Treatment Length: 17 months



Treated by Dr. Bella Shen Garnett

Initial



Final



Age: 10– Female with severe maxillary and mandibular crowding. She lost her lower canines early and there is no space for the permanent canines to come in.

Appliance: Rapid palatal expander followed sectional anterior braces and a lower lingual holding arch to hold space until the permanent canines come in.

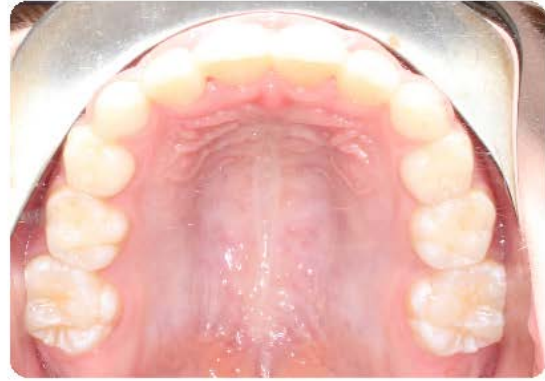
Treatment Length: 17 months



Treated by Dr. Bella Shen Garnett

Initial

Final



Age: 8– Female with an open bite and a thumb sucking habit.

Appliance: Rapid palatal expander with tongue crib followed by sectional anterior braces

Treatment Length: 12 months



Treated by Dr. Bella Shen Garnett

Initial



Final



Age: 8– Male with severe overjet, a moderate overbite, severe crowding on his lower arch and moderate crowding on his upper arch. He lost his lower primary canines early and there is no space for his permanent canines to come in.

Appliance: Rapid palatal expander followed by sectional anterior braces and a lower lingual holding arch to hold space until his permanent canines come in.

Treatment Length: 10 months



Treated by Dr. Bella Shen Garnett

Initial

Final



Age: 9–Female that is Class III with an anterior crossbite/under bite.

Appliance: Rapid palatal expander with a reverse pull headgear to advance the maxilla in anticipation that the lower jaw will continue to grow and grow last.

Phase I was done to avoid possible future jaw surgery and unlock the upper jaw so that its growth will not be hindered and can develop normally during her growth spurt. Treatment was followed by sectional anterior braces.

Treatment Length: 15 months



Treated by Dr. Bella Shen Garnett

Initial

Final



Age: 9–Female that is Class III with an under bite.

Appliance: Rapid palatal expander with a reverse pull headgear to advance the maxilla in anticipation that the lower jaw will continue to grow and grow last. Phase I was done to avoid possible future jaw surgery and unlock the upper jaw so that its growth will not be hindered and can develop normally during her growth spurt. Treatment was followed by sectional anterior braces.

Treatment Length: 12 months



Treated by Dr. Bella Shen Garnett

Initial

Final



Age: 8–Male Class III with an under bite tendency and a tongue thrust.

Appliance: Upper palatal expander and headgear.

Treatment Length: 10 months



Treated by Dr. Bella Shen Garnett

Initial



Final



Age: 7–Male presents Class II with crowding (blocked out lower left canine) and protrusion.

Appliance: Rapid palatal expander followed by sectional anterior braces and a lower lingual holding arch to hold space where he lost his primary canine early.

Treatment Length: 13 months



Treated by Dr. Bella Shen Garnett

Initial

Final



Age: 8–Female Class II with a left posterior crossbite.

Appliance: Rapid palatal expander followed by sectional anterior braces

Treatment Length: 11 months



Treated by Dr. Bella Shen Garnett

Initial

Final



Age: 7–Male Class III with an underbite, moderate overbite, severe crowding and an anterior crossbite.

Appliance: Rapid Palatal Expander with a reverse pull headgear followed by sectional anterior braces to advance the upper jaw to reduce risk of needed orthognathic surgery in the future.

Treatment Length: 19 months



Treated by Dr. Bella Shen Garnett

Initial



Final



Age: 7–Male Class III with an underbite, an edge to edge bite, an overjet, a crossbite tendency, and crowding.

Appliance: Rapid palatal expander followed by anterior sectional braces

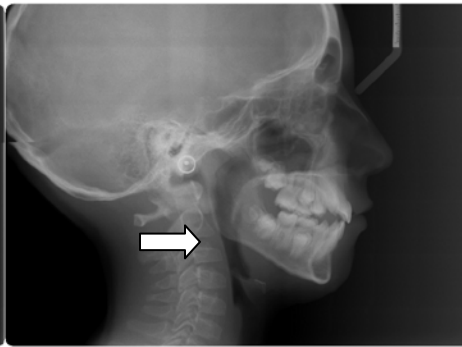
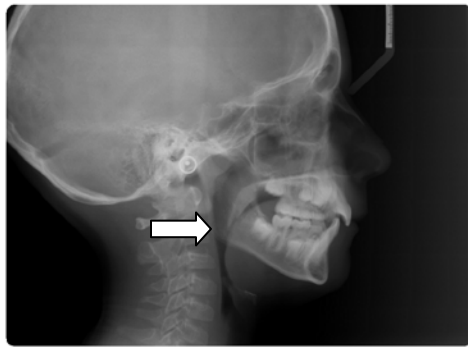
Treatment Length: 18 months



Treated by Dr. Bella Shen Garnett

Initial

Final



Age: 10–Male Class II with a crossbite and moderate overbite and retruded chin and very narrow airway at risk for sleep apnea

Appliance: Rapid palatal expander with a Herbst appliance to advance the lower jaw and maximize its growth potential. Expander decreases airway resistance in the nasal cavity and advancing the lower jaw increases the airway.

Treatment Length: 18 months



Treated by Dr. Bella Shen Garnett

Initial



Final



Age: 7–Female Class I with an open bite and crowding due to her tongue thrust habit.

Appliance: Rapid palatal expander with tongue crib and sectional anterior braces

Treatment Length: 12 months



Treated by Dr. Bella Shen Garnett

Initial



Final



Age: 9–Male with severe crowding, protrusion and a deep bite.
Appliance: Rapid palatal expander followed by sectional braces.
Treatment Length: 12 months



Treated by Dr. Bella Shen Garnett